

## Features

- Surge voltage rating = 10kV using industry standard 1.2/50us wave
- High temperature, 85°C maximum surface temp rating, flameproof plastic enclosure
- The PW-10KD05KWV is 3-leaded device that protects Line-Ground, Line-Neutral, and Neutral-Ground in accordance with IEEE/ANSI C62.41.2 / IEC EN61000-4-5 guidelines.
- Only Suitable for Inventronics LED Drivers



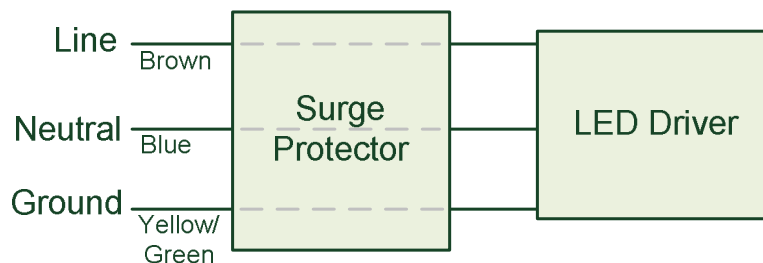
## Description

The PW-10KD05KWV is designed to be used in conjunction with LED Drivers to provide an additional level of surge and transient protection in industrial and commercial applications.

## Models

| Model        | AC Input Voltage | Clamping Voltage (L-N) | Clamping Voltage (LN-G) | In (8/20uS) |
|--------------|------------------|------------------------|-------------------------|-------------|
| PW-10KD05KWV | 90~264 Vac       | ≤2000 V                | ≤2000 V                 | 5 kA        |

## Wiring

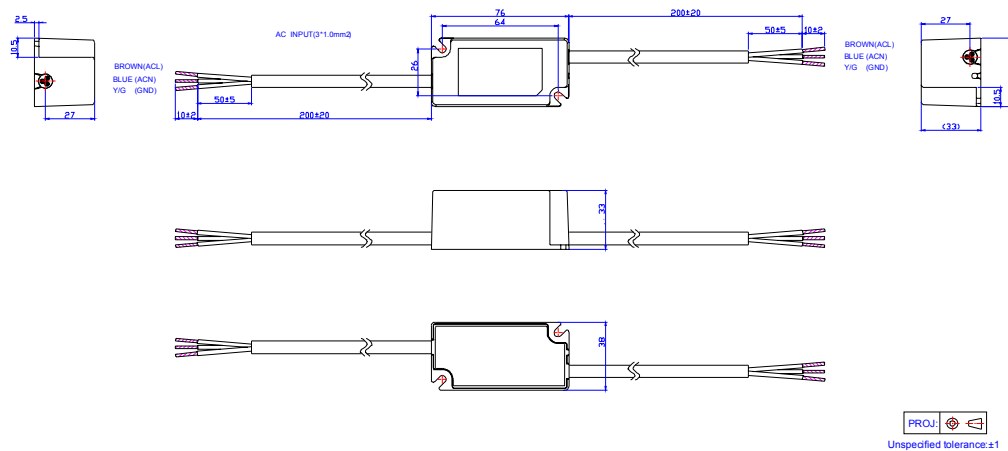


## Environmental Specifications

| Parameter                     | Min.  | Typ. | Max.  | Notes   |
|-------------------------------|-------|------|-------|---|
| Operating Ambient Temperature | -40°C | -    | +70°C | Humidity: 10% RH to 100% RH                         |
| Operating Case Temperature    | -40°C | -    | +70°C | Full load condition.<br>Humidity: 10% RH to 100% RH |
| Storage Temperature           | -40°C | -    | +85°C | Humidity: 5% RH to 100% RH                          |

Specifications are subject to changes without notice.

## Mechanical Outline



## Revision History

| Change Date | Rev. | Description of Change        |      |       |
|-------------|------|------------------------------|------|-------|
|             |      | Item                         | From | To    |
| 2013-04-28  | A    | Datasheet Release            | /    | /     |
| 2013-10-28  | B    | Environmental specifications | /    | Added |